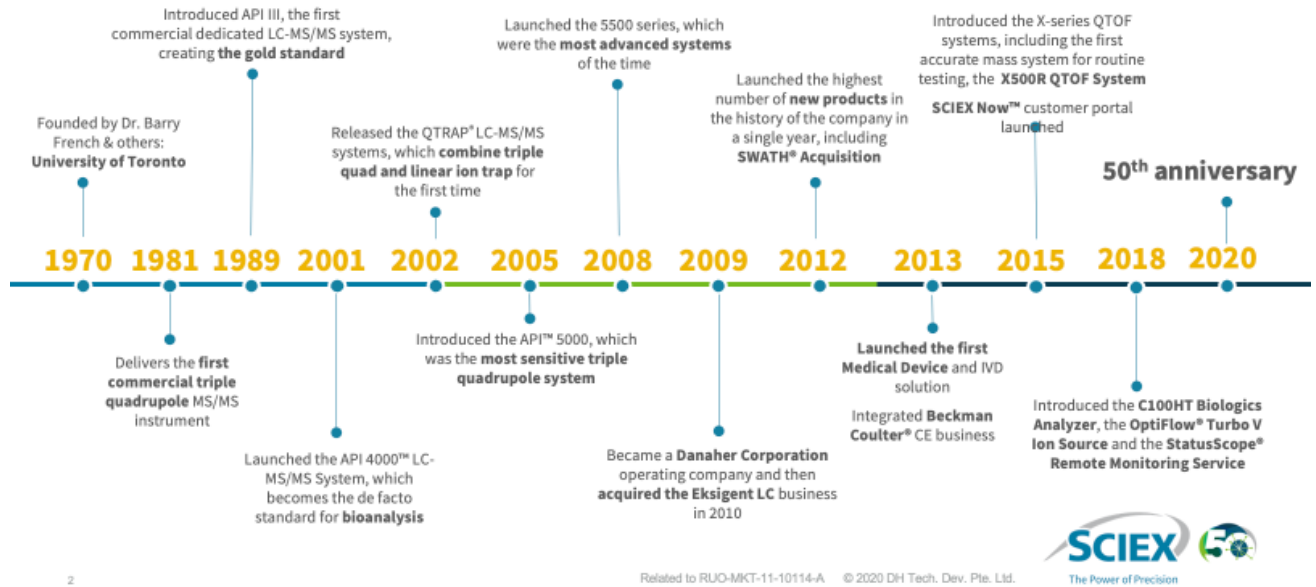


Lịch sử

50 years of innovation



Dải sản phẩm

SCIEX Triple Quad™ systems, QTRAP® systems and SelexION® Differential Mobility Separation Technology



Pushing the limits

SCIEX HPLC and CE systems



SCIEX TOF/TOF™ and TripleTOF® systems



CÔNG TY TNHH THƯƠNG MẠI DỊCH VỤ KỸ THUẬT VIỆT NGUYỄN

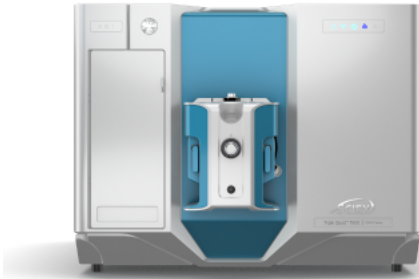
HCM: số 36 đường số 11 – Tân Thới Nhất 17 – P. Tân Thới Nhất – Quận 12 | **Hà Nội:** Tầng 1 – tòa nhà văn phòng Intracom – Số 33 – đường Cầu Diễn – P. Phúc Diễn – Q. Bắc Từ Liêm | **Đà Nẵng:** số 10 đường Lỗ Giáng 05 – P. Hoà Xuân – Q. Cẩm Lệ | **Cần Thơ:** số 275 đường Xuân Thủy – KDC Hồng Phát – P. An Bình – Q. Ninh Kiều | **Tel:** (+84-8).66 570 570 (HCM) | (+84-24).32 009276 (HN) | (+84-8).2366 566570 (Danang) | www.vietnguyenco.vn | www.vietcalib.vn | www.vattusacky.vn | www.sackykhoiphov.vn

Thông tin kỹ thuật SCIEX 7500

Enabling new levels of quantification

SCIEX 7500 System

NEW SOFTWARE, NEW ION OPTICS, NEW SOURCE



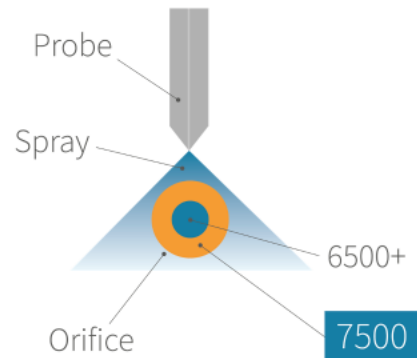
- The SCIEX Triple Quad™ 7500 LC-MS/MS System – QTRAP® Ready enables new levels of quantification across a large suite of sample types and workflows
- SCIEX OS Software is a modern mass spectrometry software platform that transforms your samples into meaningful analytical answers



Enabling greater sensitivity

SCIEX 7500 System

- Greater sensitivity can be achieved through gains in the generation of ions, capturing and transmitting ions and detecting ions
- The QTRAP® 6500+ System with IonDrive™ technology delivers performance improvements in these key areas
- The SCIEX 7500 System makes another leap forward in the capture and transmission of ions
- The sampling area of the SCIEX 7500 System orifice is 4.3x larger than the QTRAP® 6500+ System orifice

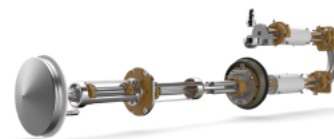
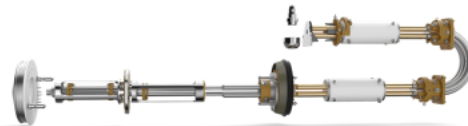


Built on a legacy of performance

SCIEX 7500 System

SCIEX 7500 SYSTEM FEATURES:

- Same rodsets as the QTRAP® 6500+ System, and dual frequency RF drive with a triple quadrupole mass range of 5–2000 Da
- The IonDrive™ High Energy Detector for fast polarity switching at 5 msec and a linear dynamic range of up to 6 orders from LLOQ
- Curved LINAC® Collision Cell for high-speed analysis with no cross-talk
- Commonality with SCIEX platforms means no retuning of compound parameters CE and CXP and no DP tuning required
- QTRAP® Ready



CÔNG TY TNHH THƯƠNG MẠI DỊCH VỤ KỸ THUẬT VIỆT NGUYỄN

HCM: số 36 đường số 11 – Tân Thới Nhất 17 – P. Tân Thới Nhất – Quận 12 | **Hà Nội:** Tầng 1 – toà nhà văn phòng Intracom – Số 33 – đường Cầu Diễn – P. Phúc Diễn – Q. Bắc Từ Liêm | **Đà Nẵng:** số 10 đường Lỗ Giáng 05 – P. Hoà Xuân – Q. Cẩm Lệ | **Cần Thơ:** số 275 đường Xuân Thủy – KDC Hồng Phát – P. An Bình – Q. Ninh Kiều | **Tel:** (+84-8).66 570 570 (HCM) | (+84-24).32 009276 (HN) | (+84-8).2366 566570 (Danang) | www.vietnguyenco.vn | www.vietcalib.vn | www.vattusacky.vn | www.sackykhoiapho.vn

SCIEX leadership in sensitivity

SCIEX 7500 System

EVOLUTION OF THE QJET® ION GUIDE

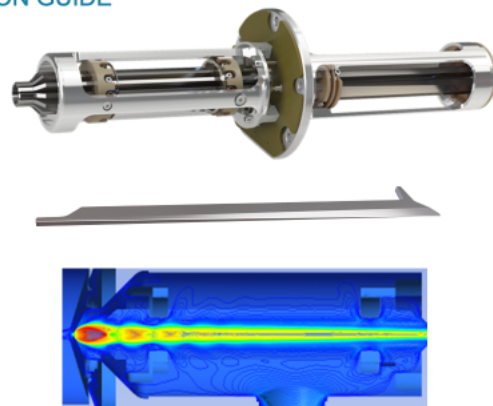


D Jet™ Ion Guide for greater sensitivity

SCIEX 7500 System

THE D JET ION GUIDE IS A DUAL STAGE RF ION GUIDE

- The D Jet Ion Guide efficiently captures and transmits the ions in the high gas flow behind the orifice plate
- The tapered dodecapole geometry of the D Jet Ion Guide focuses the ions into the second stage QJet® Ion Guide
- Gas flow for the Curtain Gas™ Interface is typically 26 L/min max on the SCIEX 7500 System (18 L/min on the QTRAP® 6500+ System)



Roughing pump 1
MS 120

Roughing pump 2
MS 40

SCIEX Triple Quad™ 7500 System

SCIEX 7500 System

DECLUSTERING (DP)



- Declustering is achieved with orifice plate voltage on the QTRAP® 6500+ System and earlier systems
- On the SCIEX 7500 System, the DP profile is flat and has been removed from tunable parameters
- On the SCIEX 7500 System, "declustering" is achieved with voltage differential between the QJet® Ion Guide and IQ0 lens or IQ0 and Q0 lens
- Both are rampable
- Useful for de-tuning signal, removing interferences and increasing signal to noise in some cases
- Q0 dissociation options are: Simple and Enhanced



SCIEX

CÔNG TY TNHH THƯƠNG MẠI DỊCH VỤ KỸ THUẬT VIỆT NGUYỄN

HCM: số 36 đường số 11 – Tân Thới Nhất 17 – P. Tân Thới Nhất – Quận 12 | **Hà Nội:** Tầng 1 – toà nhà văn phòng Intracom – Số 33 – đường Cầu Diễn – P. Phúc Diễn – Q. Bắc Từ Liêm | **Đà Nẵng:** số 10 đường Lỗ Giáng 05 – P. Hoà Xuân – Q. Cẩm Lệ | **Cần Thơ:** số 275 đường Xuân Thủy – KDC Hồng Phát – P. An Bình – Q. Ninh Kiều | **Tel:** (+84-8).66 570 570 (HCM) | (+84-24).32 009276 (HN) | (+84-8).2366 566570 (Danang) | www.vietnguyenco.vn | www.vietcalib.vn | www.vattusacky.vn | www.sackykhoiphov.vn

OptiFlow[®] Pro Ion Source with E Lens[™] Technology  SCIEX 7500 System

DESIGNED FOR MODULARITY

ESI



Microflow



APCI

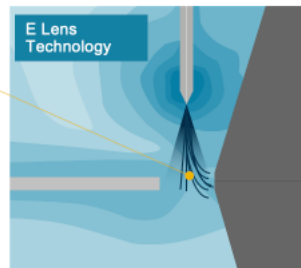
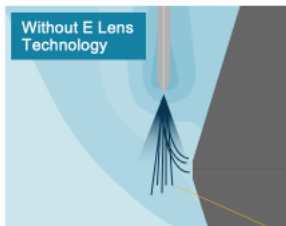


- Maximum performance from 1 μ L/min to 3 mL/min without adjustment with drop-in probes and electrodes
- A versatile ion source with wide compound coverage and interchangeable ESI and APCI towers
- E Lens Technology for both micro and analytical flow for enhanced sensitivity compared to ESI alone
- Reduced user-to-user variation
- *Designed with extensibility in mind*



E Lens[™] Technology for greater sensitivity

 SCIEX 7500 System

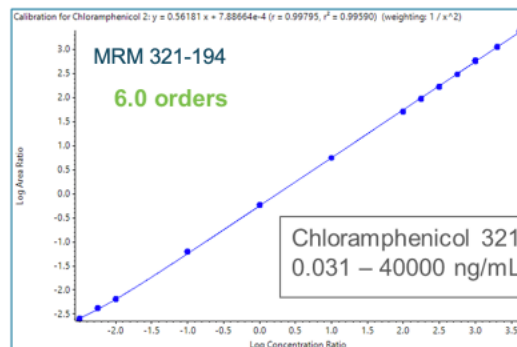


- In ESI, the E Lens Technology drives ions towards the orifice
- The E Lens Technology creates a stronger field that the droplets must traverse, leading to more efficient breakup and release of ions from the droplet
- Gains in performance are up to 2-fold with the largest gains at microflow



System dynamic range

 SCIEX 7500 System



- Up to 6 orders of linear dynamic range from LLOQ



Enabling new levels of quantification

SCIEX 7500 System

ULTIMATE SENSITIVITY ANALYSIS



- The D Jet™ Ion Guide and integrated E Lens™ Technology combine to deliver ultimate sensitivity analyses
 - Average sensitivity gains: 7x
 - Signal-to-noise gains 2.5 to 3x
- The OptiFlow® Pro Ion Source incorporates the reliability and efficiency of the legendary Turbo V™ Ion Source
 - New modularities allow fast interchanges between high flow and low flow and the ability to adapt to workflow requirements
- LDR of up to 6 orders
- Uncompromised robustness



Thông số kỹ thuật 7500

SCIEX Triple Quad 7500 system specifications

Sensitivity MRM mode - positive ESI	Reserpine 1 pg on column	S/N > 3,000,000
Sensitivity MRM mode - negative ESI	Chloramphenicol 1 pg on column	S/N > 3,000,000
IDL - positive ESI	Reserpine 0.5 fg on column (609/195)	< 0.14 fg
IDL - negative ESI	Chloramphenicol 0.5 fg on column (321/153)	< 0.14 fg
Scan speed	12,000 Da/sec	
Polarity switching	5 msec, in MRM and Scheduled MRM (sMRM) modes	
Minimum MRM dwell time	1 msec	
MRM acquisition rate	500 MRM/sec maximum	
Mass range	5-2,000 m/z	
Mass stability	0.1 Da over 24 hours	
Scan types	Full scan MS and selected ion for both Q1 and Q3, product ion scan, precursor ion scan, neutral loss or gain scan, multiple reaction monitoring (MRM)	
Detector type	High energy dynodes and multichannel electron multiplier	
Dynamic range	6 orders of magnitude	
Built-in devices	High-precision syringe pump and switching valve	

SCIEX Triple Quad 7500 system specifications (continued)

Linear ion trap mass range	50-2,000 m/z		
Scan speed	20,000 Da/s		
Linear ion trap scan types	Enhanced MS scan, enhanced product ion scan, enhanced resolution scan, MS ³ scan, MRM ³ scan		
Resolution in LIT mode	Scan speed (Da/sec)	m/z 354	m/z 922
	1000	1080	3100
	10000	540	1540
	20000	460	1320
Sensitivity EPI mode	Reserpine 10 fg on column 150-650 Da, sum of product ions 195 and 174	S/N >200	
Sensitivity MRM ³ mode	Reserpine 10 fg on column MRM ³ of 609.3/397/365 with <200 msec cycle time	S/N >30	

Source

Standard source	OptiFlow Pro ion source housing with OptiFlow Pro analytical probe and E Lens for ESI Maximum desolvation temperature 750°C Flow rate range 200 µL/min to 3 mL/min
Available source options	OptiFlow Pro APCI module supporting APCI mode OptiFlow Pro Micro probes, column heater and E Lens supporting microflow rates from 1-200 µL/min

Software

Standard software	SCIEX OS software 2.0 or higher SCIEX Triple Quad 7500: 1 License for Instrument Control and 1 license for quantitative processing for 1 PC SCIEX QTRAP 7500: 1 License for Instrument Control and 1 license for qualitative and quantitative processing for 1 PC
Available software upgrades	21 CFR part 11 v2.0 or higher Intact Quantification v2.0 or higher Scout triggered multiple reaction monitoring (stMRM) v3.0 or higher

CÔNG TY TNHH THƯƠNG MẠI DỊCH VỤ KỸ THUẬT VIỆT NGUYỄN

HCM: số 36 đường số 11 – Tân Thới Nhất 17 – P. Tân Thới Nhất – Quận 12 | **Hà Nội:** Tầng 1 – toà nhà văn phòng Intracom – Số 33 – đường Cầu Diễn – P. Phúc Diễn – Q. Bắc Từ Liêm | **Đà Nẵng:** số 10 đường Lỗ Giáng 05 – P. Hoà Xuân – Q. Cẩm Lệ | **Cần Thơ:** số 275 đường Xuân Thủy – KDC Hồng Phát – P. An Bình – Q. Ninh Kiều | **Tel:** (+84-8).66 570 570 (HCM) | (+84-24).32 009276 (HN) | (+84-8).2366 566570 (Danang) | www.vietnguyenco.vn | www.vietcalib.vn | www.vattusacky.vn | www.sackykhoiphov.vn