

APPLICATION NOTE



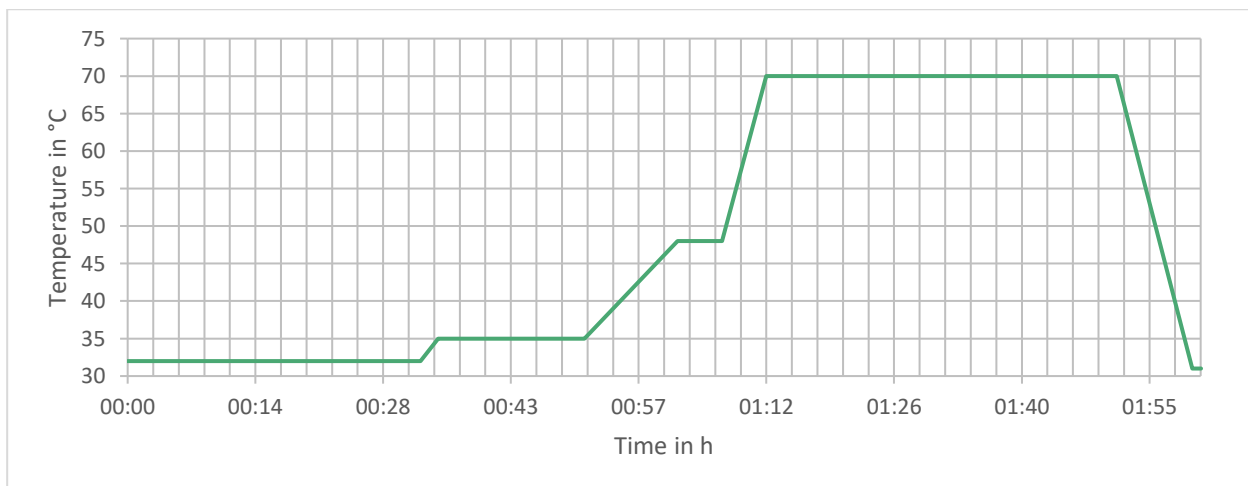
APP.002 - Physiological High-Resolution 100

Equipment.....: ARACUS
 Column.....: Lithium system, 125 mm BL x 4.0 mm ID
 Ammonium Absorber, 30 mm x 4.0 mm ID
 Eluents: Lithium system; Eluent A-ADV, B to F
 Runtime.....: 121 min
 Analysis Runtime.....: 100 min
 Gradient.....: Program in Steps
 Eluent Flow: 290 µl/min
 Column Temperature.....: 30 °C to 70 °C
 Injection Volume: 20 µl
 Reagent.....: Ninhydrin (Post-Column Derivatization)
 Reagent Flow.....: 145 µl/min
 Reactor Temperature.....: 130 °C
 Detection.....: Visible – 570 nm (Channel A) / 440 nm (Channel B)
 Sample: Physiological Standard

Eluent Steps:

Time	0 min - 31 min	31 min - 54 min	54 min - 73.5 min	73.5 min - 93 min	93 min - 114 min	114 min - 121 min
Eluent	A	B	C	D	E	F
Reagent / Wash	Reagent					Wash

Temperature Ramp:



APPLICATION NOTE

APP.002 - Physiological High-Resolution 100

