

## APPLICATION NOTE

APP.012 - Physiological High-Speed

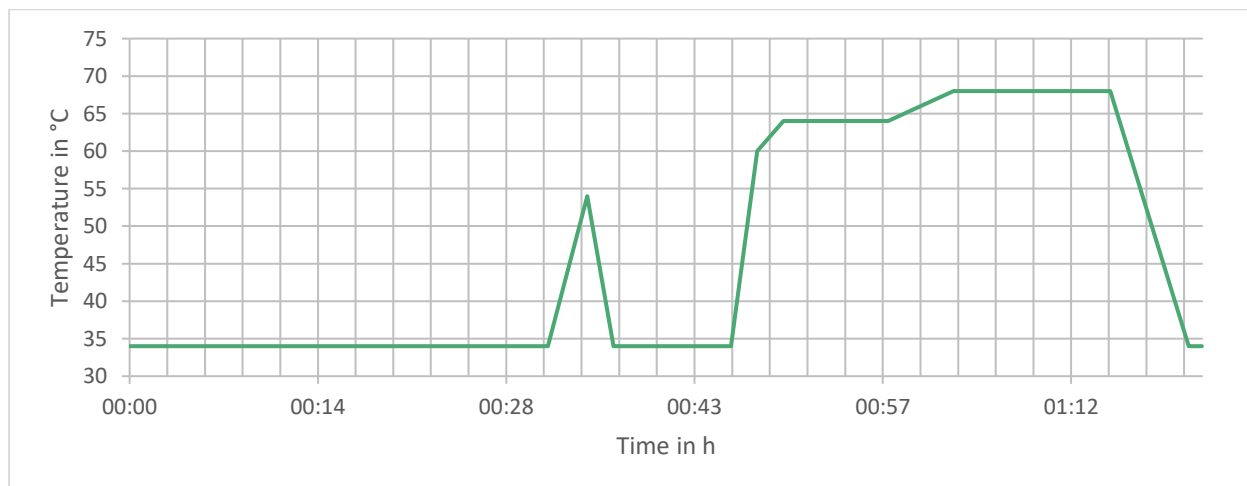


Equipment.....: ARACUS  
 Column.....: Lithium system, 75 mm BL x 4.0 mm ID  
 Ammonium Absorber, 30 mm x 4.0 mm ID  
 Eluents .....: Lithium system; Eluent A-HS to C-HS and D to F  
 Runtime.....: 82 min  
 Analysis Runtime.....: 63 min  
 Gradient.....: Program in Steps  
 Eluent Flow .....: 300 µl/min  
 Column Temperature.....: 34 °C to 68 °C  
 Injection Volume .....: 20 µl  
 Reagent.....: Ninhydrin (Post-Column Derivatization)  
 Reagent Flow.....: 150 µl/min  
 Reactor Temperature.....: 130 °C  
 Detection.....: Visible – 570 nm (Channel A) / 440 nm (Channel B)  
 Sample .....: Physiological Standard

### Eluent Steps:

Time	0 min - 25 min	25 min – 36 min	36 min - 51 min	51 min – 60.5 min	60.5 min - 77 min	77 min - 82 min
Eluent	A	B	C	D	E	F
Reagent / Wash	Reagent					Wash

### Temperature Ramp:



# APPLICATION NOTE

APP.012 - Physiological High-Speed

