

## APPLICATION NOTE

APP.026 – Biogenic Amines

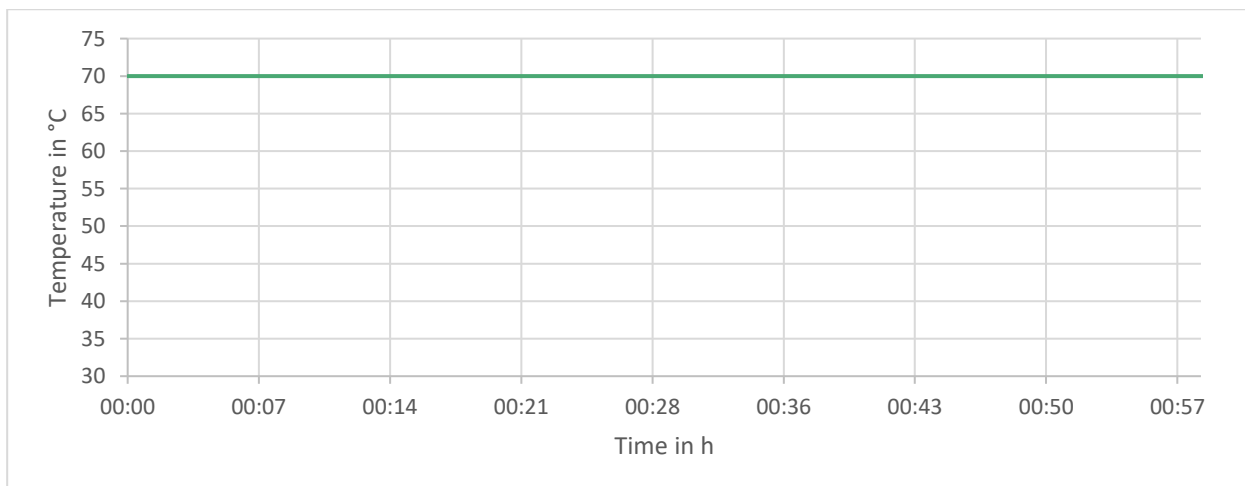


Equipment.....: ARACUS  
 Column.....: Potassium system, 75 mm BL x 2.0 mm ID  
  
 Eluents .....: Potassium system; Eluent A to D and F  
 Runtime.....: 59 min  
 Analysis Runtime.....: 39 min  
 Gradient.....: Program in Steps  
 Eluent Flow .....: 240 µl/min  
 Column Temperature.....: 70 °C  
 Injection Volume .....: 20 µl  
 Reagent.....: Ninhydrin (Post-Column Derivatization)  
 Reagent Flow.....: 120 µl/min  
 Reactor Temperature.....: 130 °C  
 Detection.....: Visible – 570 nm (Channel A) / 440 nm (Channel B)  
 Sample .....: Biogenic Amines with Dopamine and Serotonin

### Eluent Steps:

Time	0 min – 13 min	13 min – 26 min	26 min – 36 min	36 min – 53 min	53 min – 59 min
Eluent	A	B	C	D	F
Reagent / Wash	Reagent				Wash

### Temperature Ramp:



# APPLICATION NOTE

APP.026 – Biogenic Amines

