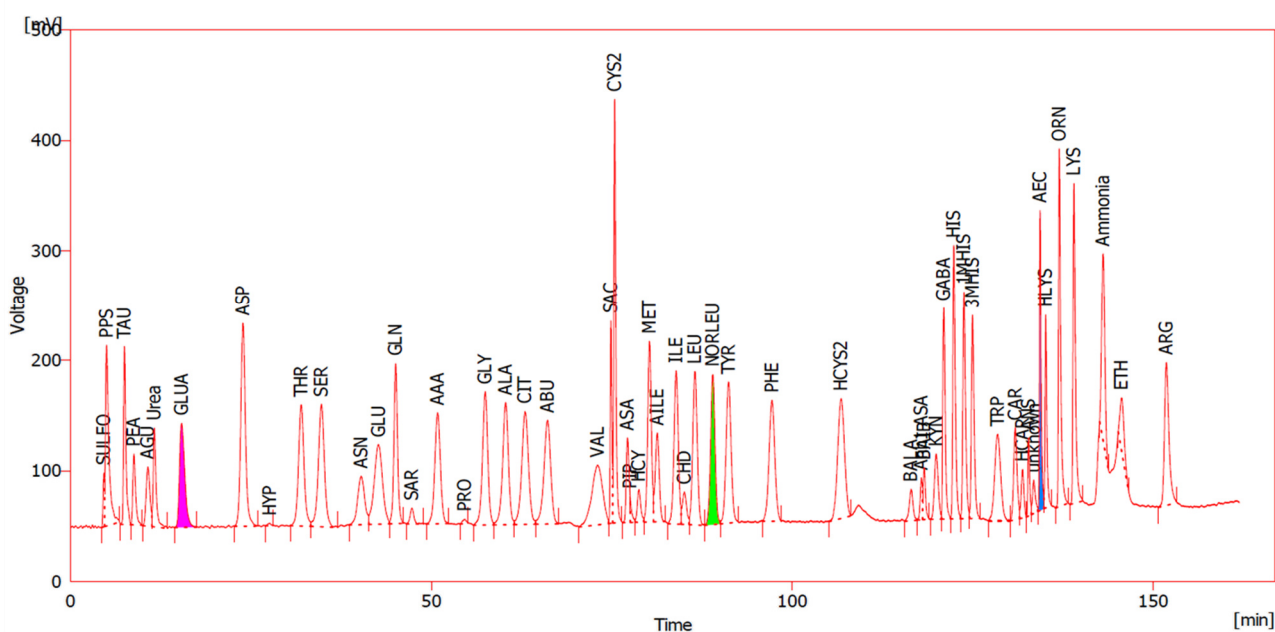


Equipment: ARACUS
 Column: Lithium system, 150 mm BL x 4.0 mm ID
 Ammonium Absorber, 30 mm x 4.0 mm ID
 Eluents.....: Lithium system; Eluent A-Adv and B to F
 Runtime: 191 min
 Analysis Runtime: 162 min
 Gradient: Program in Steps
 Eluent Flow.....: 200 µl/min
 Column Temperature: 33 °C to 74 °C
 Injection Volume: 20 µl
 Reagent: Ninhydrin (Post-Column Derivatization)
 Reagent Flow.....: 100 µl/min
 Reactor Temperature: 130 °C
 Detection: Visible – 570 nm (Channel A) / 440 nm (Channel B)
 Sample.....: Physiological Standard

Standard Solution with 100 nmol/ml (570nm)



No.	Retentiontime [min]	Amino Acid	code
1	4.6	Sulfocysteine	SULFO
2	5.0	Phosphoserine	PPS
3	7.5	Taurine	TAU
4	8.8	Phosphoethanolamine	PEA
5	10.7	Aspartylglucosamine	AGU
6	11.6	Urea	Urea
7	15.4	Glucosaminic Acid	GLUA
8	23.9	Aspartic Acid	ASP
9	27.6	Hydroxyproline	HYP
10	32.0	Threonine	THR
11	34.8	Serine	SER
12	40.3	Asparagine	ASN
13	42.7	Glutamic Acid	GLU
14	45.0	Glutamine	GLN
15	47.3	Sarcosine	SAR
16	50.9	α -Amino adipic Acid	AAA
17	54.6	Proline	PRO
18	57.5	Glycine	GLY
19	60.3	Alanine	ALA
20	63.0	Citrulline	CIT
21	66.1	α -Aminobutyric Acid	ABU
22	73.0	Valine	VAL
23	74.9	Saccaropine	SAC
24	75.4	Cystine	CYS2
25	77.2	Argininosuccinic Acid	ASA
26	77.5	Pipecolic Acid	PIP
27	78.8	Homocysteine	HCY
28	80.2	Methionine	MET

No.	Retentiontime [min]	Amino Acid	code
29	81.3	Allo-Isoleucine	AILE
30	83.9	Isoleucine	ILE
31	85.0	Homocystein-Disulfid	CHD
32	86.5	Leucine	LEU
33	89.0	Norleucine	NORLEU
34	91.2	Tyrosine	TYR
35	97.2	Phenylalanine	PHE
36	106.8	Homocystine	HCYS2
37	116.5	β -Alanin	BALA
38	117.9	Succinic anhydride	Anh1 ASA
39	118.3	β -Aminoisobutyric Acid	BAIB
40	119.9	Kynurenine	KYN
41	121.0	G Aminobutyric Acid	GABA
42	122.4	Histidine	HIS
43	123.8	1-Methyl-Histidine	1MHIS
44	125.0	3-Methyl-Histidine	3MHIS
45	128.5	Tryptophan	TRP
46	130.9	Carnosine	CAR
47	131.9	Homocarnosine	HCAR
48	132.7	Anserine	ANS
49	133.4	-	unknown
50	134.3	Aminoethylcysteine	AEC
51	135.1	Hydroxylysine	HLYS
52	137.0	Ornithine	ORN
53	139.0	Lysine	LYS
54	143.0	Ammonium Chloride	Ammonia
55	145.6	Ethanolamine	ETH
56	151.8	Arginine	ARG