



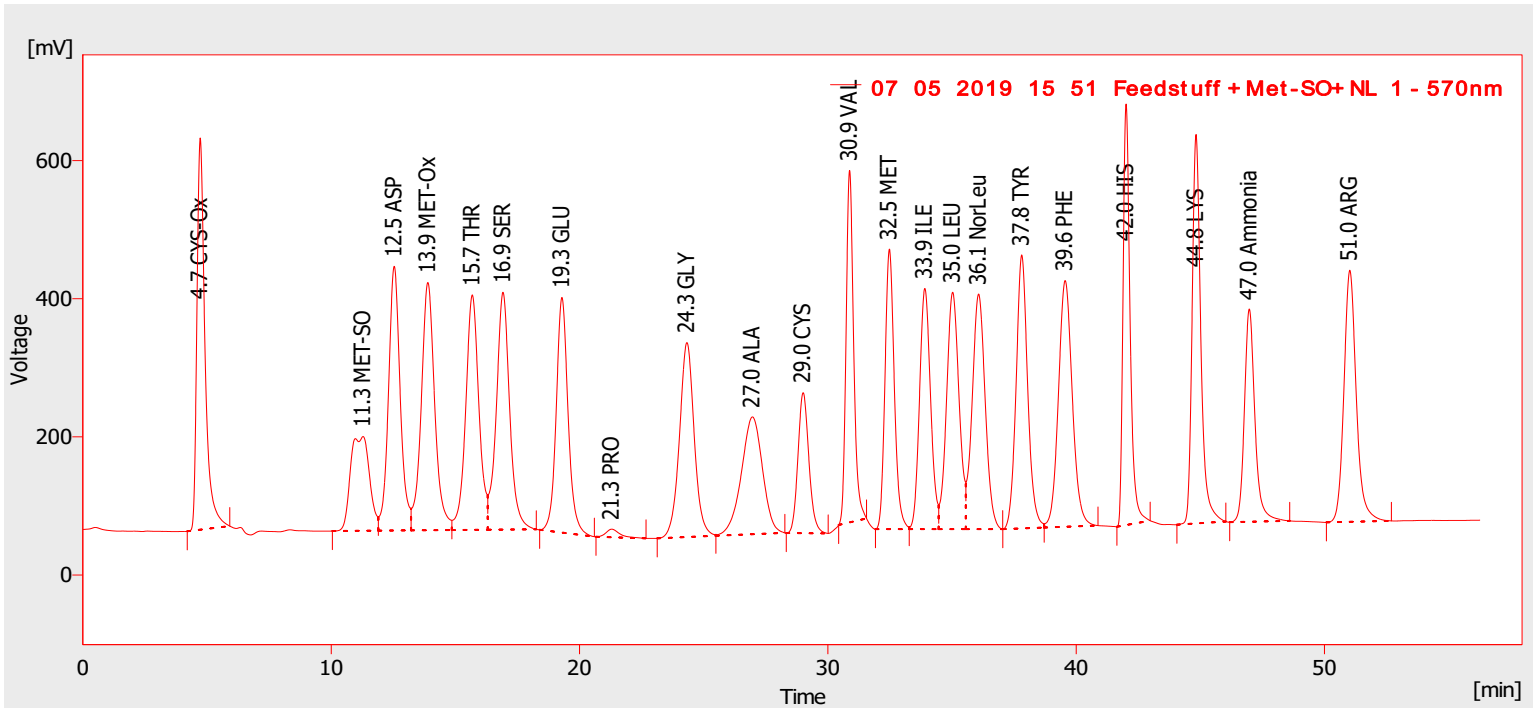
MembraPure GmbH
www.membrapure.de

Method : Feedstuff 2019 4x125 NEU1
Description : Feedstuff + MET-SO + NL
Created : 01-Nov-16 11:17

By : Administrator
Modified : 16-May-19 13:18

Column : 4x125mm CK10F
Mobile Phase : A-F(Adv), B-F(Adv), C-F(Adv), D-F, F-F
Flow Rate : 0.24 ml/min
Note : CK10F

Detection : 570nm, 440nm
Temperature :
Pressure :



Result Table (ESTD - 07_05_2019_15_51_Feedstuff +Met-SO+NL_1 - 570nm)

	Compound Name	Reten. Time [min]	Area [mV.s]	Amount [nmol/ml]
1	CYS-Ox	4.724	12805.851	100.000
2	MET-SO	11.284	7253.386	33.000
3	ASP	12.536	12592.845	100.000
4	MET-Ox	13.892	13568.605	100.000
5	THR	15.680	12623.499	100.000
6	SER	16.916	12888.523	100.000
7	GLU	19.292	11305.571	100.000
8	PRO	21.296	449.743	100.000
9	GLY	24.324	11613.739	100.000
10	ALA	26.964	10059.729	100.000
11	CYS	29.004	6217.039	50.000
12	VAL	30.876	10714.026	100.000
13	MET	32.476	10514.122	100.000
14	ILE	33.904	10786.207	100.000
15	LEU	35.024	12025.938	100.000
16	NorLeu	36.068	12452.229	100.000
17	TYR	37.808	12835.448	100.000
18	PHE	39.556	13869.374	100.000
19	HIS	42.008	11993.376	100.000
20	LYS	44.824	13686.896	100.000
21	Ammonia	46.968	9050.932	100.000

Result Table (ESTD - 07_05_2019_15_51_Feedstuff +Met-SO+NL_1 - 570nm)

	Compound Name	Reten. Time [min]	Area [mV.s]	Amount [nmol/ml]
22	ARG	51.020	12592.893	100.000
		Total	241899.972	2083.000

Result Table (ESTD - 07_05_2019_15_51_Feedstuff +Met-SO+NL_1 - 440nm)

	Compound Name	Reten. Time [min]	Area [mV.s]	Amount [nmol/ml]
1	PRO	21.344	8784.906	100.000
		Total	8784.906	100.000