

# ORGANIC SAMPLE PREPARATION



**LabTech**

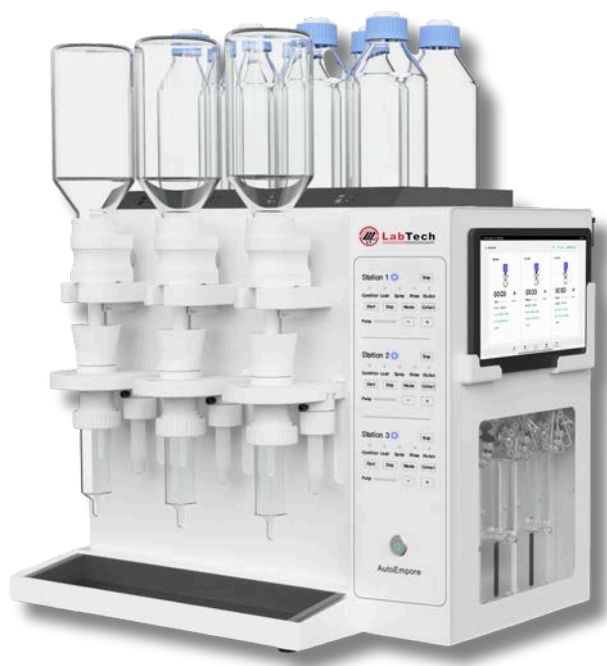
WWW.LABTECHSRL.COM

# AUTOEMPORE THE INNOVATIVE AUTOMATION SOLUTION FOR SPE

AutoEmpore is an **advanced system** engineered **for efficient solid-phase extraction (SPE) of large-volume water samples**, including clean water, surface water, municipal wastewater and industrial effluents. With its exceptionally fast sample loading, AutoEmpore delivers a substantial improvement in efficiency over traditional manual SPE methods.

It features an innovative sample loading design, automatic online filtration and water removal capabilities, replacing numerous complex manual operations. This streamlines the process, greatly reduces sample processing time and increases test efficiency.

The instrument is widely applicable across various industries, including environmental disease control and public security.



- » **Modular design: 3–12 channels, tailored to your needs**
- » **Short pathway for direct water loading, no pre-filtration needed**
- » **Cartridge & disk compatible**
- » **Smart wireless tablet control**
- » **Multiple vial collection options: no transfer tubes, no wasted time**
- » **Compact footprint, maximum efficiency on your bench**

## APPLICATIONS



» Food and feed



» Environmental



» Pharmaceutical



» Petrochemical



» Universities

## TECHNICAL FEATURES

### FLEXIBLE SAMPLE HANDLING

Run 3 or 6 samples individually or combine systems to process up to 12 samples simultaneously.

### OPTIMIZED PATHWAY DESIGN

Short flow paths for efficient analysis of emerging contaminants.

### DIRECT WATER SAMPLING

Online removal eliminates the need for filtration.

### MULTI-SOLVENT CAPABILITY

Use up to 8 different solvents, conveniently positioned on top for space efficiency.

### METHOD-READY

Fully compatible with EPA 533 & 537 protocols

### VERSATILE COMPATIBILITY

Works with 1, 3, 6 mL cartridges and 47 mm disks (90 mm option available), plus various collection vials.

### INERT, PFAS-FREE CONSTRUCTION

Safe for sensitive environmental applications.

### USER-FRIENDLY CONTROL

Wireless touch interface for intuitive operation.

### ORIGINAL SAMPLE BOTTLE USE

Eliminates the need to transfer samples to other containers.

## BOOST PRODUCTIVITY

COMBINE UP TO 4 UNITS TO PROCESS THOUSANDS OF SAMPLES DAILY



Scalable Modular Design – Run 3, 6, 9, or 12 Channels in Perfect synchronized

# SPE2000 THE ULTIMATE AUTOMATION FOR SPE

The **SPE2000** is a **fully automated, multi-channel solid phase extraction (SPE) system** designed to simplify and accelerate sample preparation across diverse fields, including environmental, food, chemical and pharmaceutical analysis. Unlike traditional manual SPE devices, the SPE2000 enables parallel or sequential multi-channel processing to dramatically boost laboratory throughput. By automating every step of the SPE workflow, it delivers unmatched consistency, efficiency and reproducibility in high-demand analytical environments.



## TECHNICAL FEATURES

### ▶ MULTIPLE CHANNEL OPTIONS

Available in 6- and 8-channel models to suit your throughput needs.

### ▶ HIGH SAMPLE CAPACITY

Process up to 60 samples (6-channel) or 80 samples (8-channel) simultaneously.

### ▶ VERSATILE SPE SUPPORT

Compatible with 1, 3, 6 and 12 mL extraction cartridges.

### ▶ FLEXIBLE VOLUMES

Sample volumes from 10 mL to 1 L; collection volumes from 10–80 mL.

### ▶ AUTOMATIC RACK RECOGNITION

Reduces errors by identifying racks automatically.

### ▶ MULTI-SOLVENT SUPPORT

Use up to 8 different solvents simultaneously.

### ▶ BUILT-IN FILTRATION

Automatic online filtration handles particle-containing samples effortlessly.

### ▶ USER-FRIENDLY TOUCH CONTROL

11.6-inch Android touchscreen for intuitive, fast operation.

### ▶ EFFICIENT WASTE MANAGEMENT

Four-way waste liquid discharge system.

### ▶ INTELLIGENT MONITORING

Tracks solvent volume, gas pressure and system status in real time.

### ▶ SMART WORKFLOW MANAGEMENT

Automatically calculates method and batch durations, continuously updating remaining run time.

## APPLICATIONS

» Food    » Environment    » Pharmaceutical    » Petrochemical    » Universities    » Chemistry

# EXTRAPID MANUAL CARTRIDGE-DISK EXTRACTOR

Extrapid is a Solid Phase Extraction (SPE) workstation engineered to maximize efficiency compared to traditional disk and cartridge SPE workflows. Designed for performance and versatility, it enables up to 4 extractions simultaneously under manual, vacuum-controlled operation – delivering a high-quality, cost-effective alternative to expensive automated systems. Universally compatible with all 47 / 90 mm disks and cartridges, Extrapid features an independent channel design that ensures precise control of each extraction while eliminating the risk of cross-contamination. Its innovative flow path switching system supports environmentally friendly operation by collecting organic and aqueous waste in separate reservoirs, combining precision, efficiency and sustainability in one powerful solution



## TECHNICAL FEATURES

- ▶ **EFFICIENT 3-WAY VALVES**  
Smartly control sample collection and waste discharge.
- ▶ **WIDE COMPATIBILITY**  
Works with 1, 3, 6 mL cartridges and 47 mm disks (90 mm option available).
- ▶ **STREAMLINED OPERATION**
  - No need to switch the vacuum pump ON/OFF
  - No waiting for venting or removing collection vials
  - No draining of waste or cleaning the vacuum chamber
- ▶ **PRECISE FLOW CONTROL**  
Ensures accurate flow rates and high reproducibility.
- ▶ **FLEXIBLE SAMPLE HANDLING**  
Run up to 4 samples individually or simultaneously
- ▶ **HIGH THROUGHPUT**  
Sample flow rates up to 100 mL/min
- ▶ **DURABLE CONSTRUCTION**  
All solvent-contacting parts made from PTFE or stainless steel for superior anti-corrosion performance.

## APPLICATIONS



» Universities



» Food



» Environmental



» Chemistry

# EXTRAPID PFAS FREE MANUAL CARTRIDGE-DISK EXTRACTOR

The Extrapid PFAS-Free manual SPE system is the perfect solution for processing large-volume samples in PFAS analysis. Designed for flexibility and reliability, it delivers a unique extraction platform tailored to standard and routine SPE workflows in environmental testing. It includes all features and benefits of standard Extrapid version.



## PFAS FREE VERSION

### TECHNICAL FEATURES

- ▶ **FLEXIBLE SAMPLE HANDLING**  
Process up to 6 samples individually or simultaneously.
- ▶ **EFFICIENT 6-WAY VALVES**  
Smartly control sample collection and waste discharge.
- ▶ **METHOD-READY**  
Fully compatible with EPA 533 & 537 protocols.
- ▶ **INERT, PFAS-FREE CONSTRUCTION**  
Safe for sensitive applications.
- ▶ **WIDE COMPATIBILITY**  
Works with 1, 3, 6 mL cartridges and 47 mm disks (90 mm disk option available).
- ▶ **PRECISE FLOW CONTROL**  
Ensures accurate flow rates and high reproducibility.
- ▶ **CONVENIENT SAMPLE COLLECTION**  
Uses PP bottles for PFAS analysis

### APPLICATIONS



» Universities



» Environmental

# WSPE MANUAL VACUUM MANIFOLD

In Solid Phase Extraction (SPE), precise flow rate control is essential to ensure reproducible results. Unlike conventional systems, the LabTech WSPE vacuum manifold is equipped with a patented valve system that guarantees accurate flow regulation for each individual cartridge. With WSPE, you can process up to 12 (WSPE12) or 24 (WSPE24) samples simultaneously, combining precision, reliability and efficiency in every extraction.



## TECHNICAL FEATURES

- ▶ **DURABLE GLASS CHAMBER**  
Resistant to solvents, preventing condensation and discoloration for crystal-clear performance.
- ▶ **PRECISION VACUUM CONTROL**  
Screw-type, solvent-resistant regulator for accurate and consistent vacuum.
- ▶ **ROBUST ANTI-CORROSION COVER**  
Keeps its shape even under high-pressure operation.
- ▶ **VERSATILE TUBE COMPATIBILITY**  
PTFE rack fits 11, 13, and 15 mm tubes to handle virtually any lab workflow.
- ▶ **PREMIUM PTFE VIAL RACK**  
Reliable, long-lasting support for your collection vials.

## APPLICATIONS



» Universities



» Environmental



» Food



» Chemistry



WWW.LABTECHSRL.COM

LabTech is a leading manufacturing company with skills and passion devoted to provide advanced laboratory solutions to the analytical community. We are located in Sorisole, northern Italy, with facilities in USA and China. Incorporated with global branches, LabTech is organized into R&D, production, marketing & sales and customer support. Major LabTech products include organic/inorganic sample preparation systems, laboratory cooling/ heating/temperature control equipments, analytical instruments, gas generators, laboratory centrifuges and liquid nitrogen generators. With knowledgeable scientists and experienced engineers, our R&D team has developed and released a series of new lab equipments and instruments dedicated to the modern analytical laboratories. With all of these accomplishments and our endless research and development efforts, we are proud to be your professional partner.



LabTech Srl

Via Fatebenefratelli, 1/5 - 24010 Sorisole (BG) - Italy  
Tel: +39 035 576614 [www.labtechsrl.com](http://www.labtechsrl.com)  
email: [marketing@labtechsrl.com](mailto:marketing@labtechsrl.com)